



## ALDO ALESSIO REGATTA

St. Francis Yacht Club

July 28-29, 2012

### SAILING INSTRUCTIONS

#### 1. RULES

- 1.1** The regatta will be governed by the *Rules* as defined in *The Racing Rules of Sailing* (RRS) and the Aldo Alessio Perpetual Deed of Gift as modified by the Notice of Race and these Sailing Instructions (including Attachments A & B). For one-design classes: the respective class rules will apply, except J/105 Fleet One Class rules will replace the National Association Class Rules.
- 1.2** RRS 40 is changed by deleting "When flag Y is displayed with one sound before or with the warning signal,".

#### 2. ENTRIES

Eligible boats shall complete registration online ([www.stfyc.com](http://www.stfyc.com)) prior to 0930 hours on July 28, 2012.

#### 3. COMMUNICATION WITH COMPETITORS

- 3.1** A Competitors' Meeting will be held at StFYC Saturday, July 28 at 0930 hours.
- 3.2** Official Notices will be posted on the Official Regatta Notice Board located in the hallway adjacent to the side (Regatta) entrance of StFYC.
- 3.3** Changes to the Sailing Instructions will be posted by 1000 hours on the day they are to take effect, except any changes to Sailing Instruction 4, Number & Schedule of Races, will be posted by 1900 hours on the day before they take effect.
- 3.4** Signals made ashore will be displayed from the flagpole located on the StFYC Race Deck.
- 3.5** Questions regarding the Sailing Instructions may be submitted in writing to the Race Committee. Questions and written responses will be posted on the Official Regatta Notice Board.
- 3.6** Competitors should monitor **VHF 69** for on the water communication with the Race Committee.

#### 4. NUMBER & SCHEDULE OF RACES

<u>DAY &amp; DATE</u>	<u>RACE #</u>	<u>TIME OF FIRST WARNING SIGNAL</u>
Saturday – July 28	1	1100 Hours
	2	Immediately following Race 1
	3	Immediately following Race 2
Sunday – July 29	4	1100 Hours
	5	Immediately following Race 4

#### 5. RACING AREA

The intended racing area will be the Central San Francisco Bay and its approaches.

#### 6. COURSES & MARKS

- 6.1** The courses and marks are described in Attachment "A".
- 6.2** No later than the Warning Signal, a placard designating the course will be displayed from the Signal Boat.

#### 7. RESTRICTED AREAS

- 7.1.** Boats shall not pass between the following objects and the closest point ashore:
- (a)** The "H" Beam (located approximately 200 yards west of StFYC).
  - (b)** Anita Rock and its Buoy "AR".
  - (c)** The South Tower of the Golden Gate Bridge.
  - (d)** The Bell Buoy off the west end of Alcatraz Island.

- (e) The buoy south of Point Blunt on Angel Island.
- (f) All breakwaters in the vicinity of Fisherman's Wharf and Aquatic Park.
- (g) Round orange buoy set off of Piers 39 and 45 (if set).
- (h) Round orange buoy set north of the StFYC Harbor entrance (if set).

7.2. A boat that breaks this rule may not correct her error per RRS 28.1 and shall retire. This changes RRS 28.1.

7.3. The above-mentioned areas are defined as obstructions.

## 8. THE START

8.1 The Starting Line will be between a staff displaying an orange and yellow striped flag on the Starting Line Signal Boat and a red inflatable cone mark, or an orange and yellow striped flag on a Starting Line Mark Boat.

8.2 For one-design classes, the class flag will be a white flag with a black class insignia.

8.3 A boat shall not start later than four minutes after her starting signal. A boat that starts later than four minutes after her starting signal will be scored DNS. This changes RRS A5.

## 9. RECALLS

The Race Committee may hail the sail number(s) of the boat(s) identified on the course side of the starting line after the starting signal by VHF. The failure of a hail, the failure of a boat hearing the hail or the order of the hails shall not be grounds for redress. This changes RRS 62.1(a).

## 10. THE FINISH

10.1 Finish Line (DW): between a staff displaying an orange and yellow striped flag on the Signal Boat and a round orange buoy set to port (when looking downwind).

10.2 Finish Line (RD): between Mark A (outer StFYC Buoy) and a yellow placard on the StFYC Race Deck.

## 11. TIME LIMIT

11.2 For Saturday, July 28 the Time Limit is 2 hours. A boat failing to finish within 30 minutes after the first boat in her class sails the course and finishes will be scored "Did Not Finish" by the Race Committee. This Changes RRS 35.

11.4 For Sunday the Time Limit is 4 hours. A boat failing to finish within 30 minutes after the first boat in her class sails the course and finishes will be scored "Did Not Finish" by the Race Committee. This Changes RRS 35.

## 12. PROTESTS AND REQUESTS FOR REDRESS

12.1 Protests and requests for redress shall be written on Standard US SAILING Protest Forms. Protest Forms are available at the St. Francis Yacht Club Jury Desk. Protests and requests for redress shall be lodged with the Protest Committee Representative at the Jury Desk within 60 minutes after the arrival of the Race Committee Signal Boat ashore or the time of the last finisher for the day, whichever is later. This time limit will be posted on the Official Regatta Notice Board.

12.2 The time and place of all protest hearing(s), the boat(s) protesting, boat(s) being protested and boat(s) requesting redress will be posted on the Official Regatta Notice Board not later than 30 minutes after the protest filing deadline established above. This shall serve as notification as required by RRS 63.2.

12.3 A request to reopen a hearing on the last day of racing must be delivered to the Jury Desk within 60 minutes of the posting of the Protest Committee's decision (oral or written). This changes RRS 66.

12.4 For protest filed on Friday, July 27, hearings will be scheduled for Saturday after racing in accordance with SI 12.2.

## 13. DISPOSAL OF WASTE OR TRASH

No boat shall discharge trash of any kind into the San Francisco Bay. Any boat observed breaking this rule is subject to protest only by the Race Committee or Protest Committee. The penalty for a breach of this rule, which may include disqualification from a race, is at the discretion of the Protest Committee. This changes rules 60.1(a) and 64.1(a).

## 14. SCORING

14.1 One race must be completed to constitute a series.

14.2 Each boat's final score will be the sum of her scores for all races. This changes RRS A2.

**15. PRIZES**

**15.1** Trophies will be awarded based upon participation.

**Additional Notices**

**BERTHING**

All yachts competing in the event may be moored free of charge at the StFYC guest docks one night prior to the beginning of racing and one night after racing concludes.

**ATTACHMENT A  
OFFICIAL DESCRIPTION OF MARKS AND COURSES**

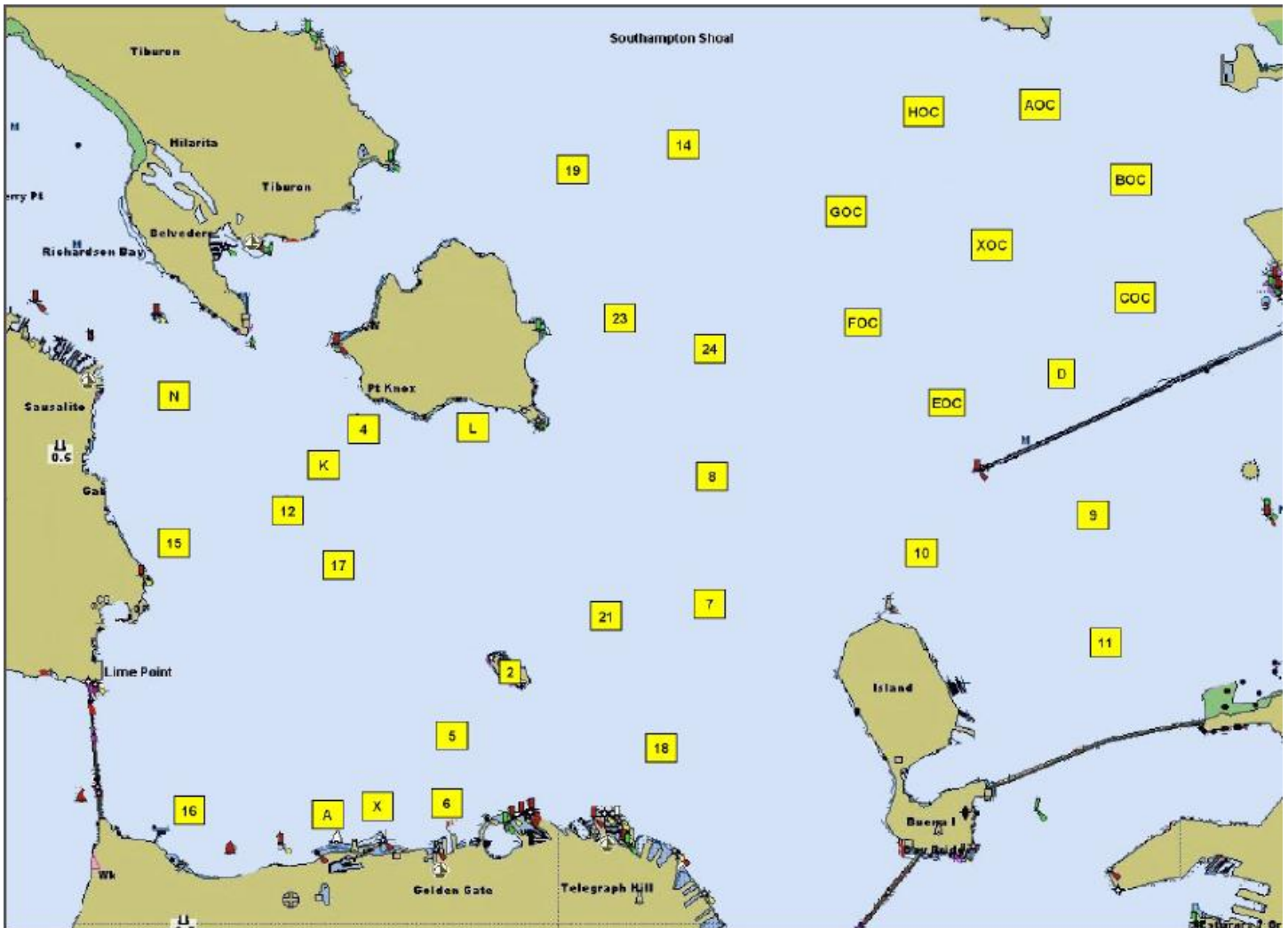
<b>MARK</b>	<b>DESCRIPTION</b>
<b>1</b>	Inflatable yellow buoy set as a Windward Mark
<b>1o</b>	Inflatable red buoy set as an Offset Mark to be rounded in the same direction as the Windward Mark
<b>3g</b>	Two inflatable yellow buoys set as a Leeward Gate Located approximately 300 yards upwind of the Starting Line
<b>6</b>	Yellow Can "M" 200 yd North of Ft Mason Docks (or temporary orange ball)
<b>8</b>	Red Bell Buoy - R "4" Fl 4s Horn 1 nm East of Point Blunt
<b>16</b>	Yellow Can "TB" (Tom Blackaller) .2 NM East of Fort Point
<b>17</b>	Green/Red RG "HR" Fl (2+1) R6s Harding Rock
<b>18</b>	Green/Red Bell Buoy - RG "BR" Fl (2+1)G6s Bell, Blossom Rock
<b>24</b>	R "6" Fl R 4s Bell, 1.1 nm East of Quarry Pt

<b>COURSE</b>	<b>ROUNDING ORDER</b>
A	Start →1(p) →1o →3g →1(p) →1o →Finish(DW)
B	Start →1(s) →1o →3g →1(s) →1o →Finish(DW)
C	Start →1(p) →1o→3g →1(p) →1o→3g →Finish(RD)
D	Start →1(s) →1o →3g →1(s) →1o →3g →Finish(RD)
E	Start →1(p) →1o →3g →1(p) →1o →3g →1(p) →1o →Finish(DW)
F	Start →1(s) →1o →3g →1(s) →1o →3g →1(s) →1o →Finish(DW)
G	Start →16(p) →18(p) →16(p) →6(p) →Finish(RD)
H	Start →16(p) →8(p) →16(p) →18(p) →Finish(RD)
J	Start →16(p) →24(p) →17(p) →6(s) →16(p) →Finish(RD)
K	Start →16(p) →24(p) →17(p) →6(p) →18(p) →Finish(RD)

'(p)' designates the Mark shall be rounded to port AND '(s)' designates the Mark shall be rounded to starboard

**ATTACHMENT B**  
**COMMERCIAL TRAFFIC, SAFETY**

- B1** Boats shall not impede the passage of commercial vessels and shall comply with the U.S. Inland Navigation Rules Act of 1980.
- B2** If a commercial vessel has sounded five blasts, and/or the vessel or the Coast Guard identifies an offending boat, the Race Committee shall protest the boat, in which case the Protest Committee shall assume that the identified boat has impeded passage or violated the U.S. Inland Navigation Rules, and the identified boat shall have the burden of proving otherwise. In the case of a complaint by Vessel Traffic or the Coast Guard, the protest time limit shall be extended up to two days after the conclusion of the regatta. This changes RRS 60.2(a) and 61.3.
- B3** A Race Committee boat may signal a boat to alter course to avoid impeding the passage of commercial vessels by making a sound signal (horn or whistle) and pointing Code Flag V at the boat. The signaled boat shall promptly comply with the signal unless compliance would create an unsafe condition. If a boat fails to comply with such a signal, the Race Committee shall protest the boat, in which case the Protest Committee shall assume that the course alteration would not have created an unsafe condition, and the protested boat shall have the burden of proving otherwise.
- B4** A boat may be penalized independently under any paragraph of this SI. A violation of any part this sailing instruction shall not be exonerated by a Scoring Penalty, and a resulting disqualification shall not be excludable under RRS A2. The StFYC shall cooperate with and provide relevant information to the Coast Guard or other governmental authority regarding investigations of boats impeding ship traffic or violating U.S. Inland Navigation Rules



Central Bay Chartlet  
(for reference only)